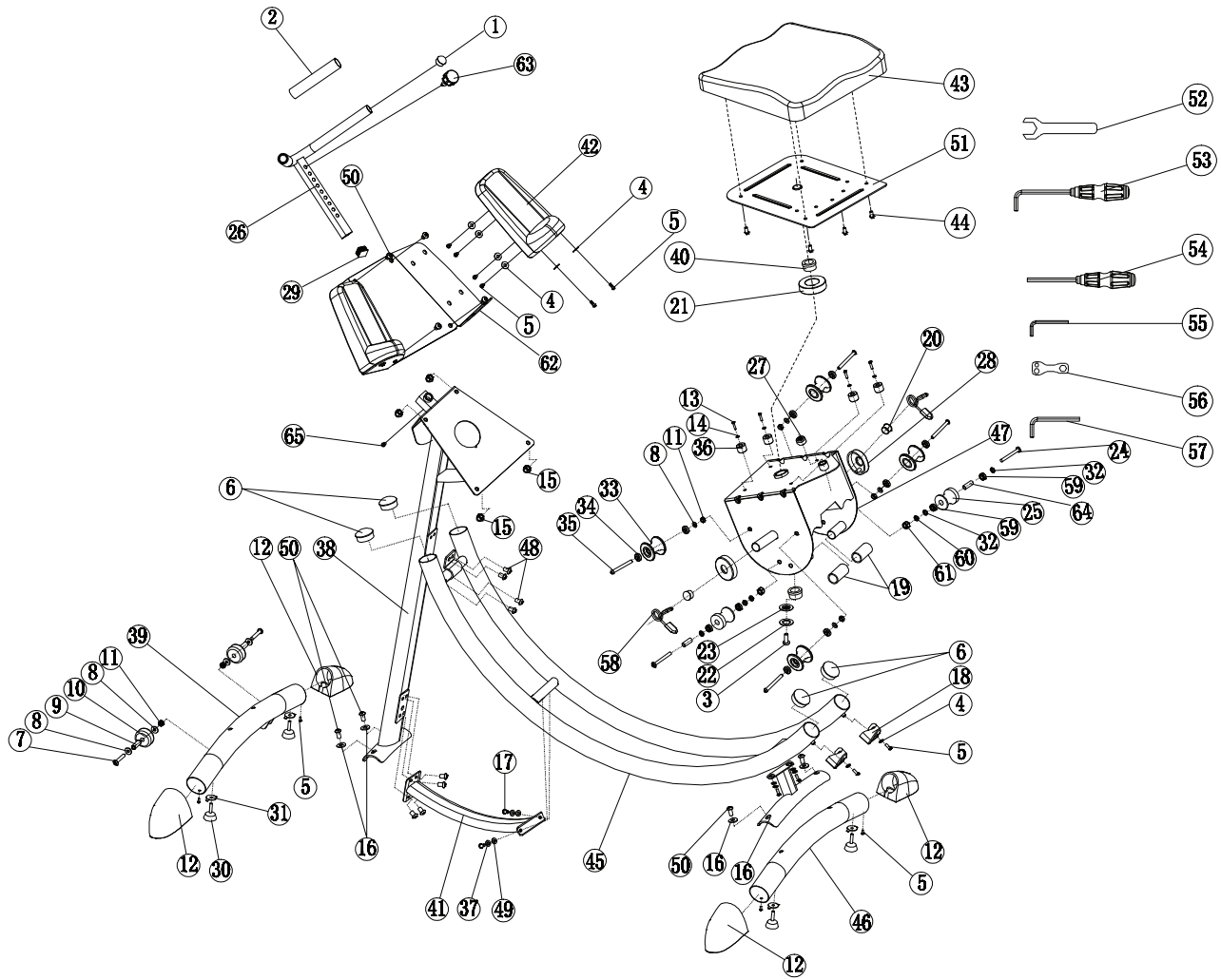


PARTS LIST AND VIEW



NO	Part Name	Specification	QTY(PCS)	NO	Part Name	Specification	QTY(PCS)	NO	Part Name	Specification	QTY(PCS)
01	circular piston match	match ø25.4*1.4 tubing(ø31)	2	26	arm plate console		1	51	seat plate		1
02	handlebar grip	ø23*3*220	2	27	muffler	ø28*13	1	52	wrench tool	S17	1
03	M10*25 hex screw	M10*25	1	28	weight post collar	ø70*12	2	53	green handle L-shaped allen tool	S6	1
04	ø18 flat washer	ø18*d6*1.2	14	29	square end cap	match ø25*25*1.5 tubing	1	54	green handle allen tool	S6	1
05	M6*15 hex screw	M6*15	18	30	leveler	ø50*67,M10 44mm thread	4	55	allen tool	A S5	1
06	ball piston match	match ø50.8*2.0 tubing	4	31	leveler orientation	6.5*54.5*3.0,M10	4	56	wrench tool	B S10/S13/S17	1
07	M8*45 hex screw	M8*45_20mm thread)	2	32	ø15 subulate flat washer	D15*d10*3	4	57	allen tool	S6	1
08	ø16 flat washer	ø16*d8*1.5	8	33	roller wheel	ø50*60	4	58	weight plate clamp		2
09	front foot wheel bushing	ø13*1.5*41.5	2	34	bearing	608ZZ_ABEC-5	8	59	bearing	6800Z	4
10	front foot wheel	ø47*27	2	35	M8*85 hex screw	M8*85(20mm thread)	4	60	ø20 flat washer	D20*d10*2	2
11	M8 nut	M8	6	36	seat swivel bushing	ø25*20	4	61	M10 nut	M10	2
12	foot grip match	128*95*86	4	37	ø8 spring washer	ø8	4	62	arm plate assembly		1
13	M5*15 phillips screw	M5*15	4	38	front support post		1	63	handle adjustment knob	M16*1.5P	1
14	ø10 flat washer	ø10*d5*1.0	4	39	front foot		1	64	spacing wheel bushing	OD14*T2.0*L41.5	2
15	M10 nut cap	M10	4	40	ø38 nylon sleeve	ø38*ø25*19	2	65	M8x15 hex screw	M8*15L	1
16	R40 ø25 arc washer	ø25*d10*2.0_R40	4	41	front support brace		1				
17	M8*20 hex screw	M8*20	4	42	arm cushion	255*115*115	2				
18	bumper	49*44*34	2	43	seat cushion	406*368*80	1				
19	seat swivel bushing	ø23*37	2	44	M8*15 hex screw	M8*15	4				
20	circular piston match	matchø25.4*1.4 tubing	2	45	ab coaster cs1000 track		1				
21	nylon bushing	ø70*ø40*20	1	46	rear foot		1				
22	ø10 spring washer	ø10	1	47	U shape seat carriage		1				
23	lifted washer	ø38*ø10.5*2	1	48	M10*15 hex screw	M10*15	8				
24	M10*75 hex screw	M10*75	2	49	R12.5 ø16 arc washer	ø16*d8*1.5, R12.5	4				
25	spacing wheel	ø44*L52	2	50	M10*20 hex screw	M10*20	8				